

Hearing **Able**™

PERSONAL SOUND AMPLIFIER

 **Bluetooth** with Low Energy Technology

USER MANUAL

IRIS20

v1.10

Contents

Introduction	2
Features	3
Technical Specifications	4
Preparation	5
- Configuration	
- Ear Dome	
- Battery	
- How to Wear	
Application Program	6
- How to install	
- How to use	
Precaution to Use	7
- Hearing Test	8
- Change the environment mode and sound volume in the application program	11
- How to Adapt	
Maintenance	
- Maintenance method	
- Cleaning method	12
- Battery management	
- Operating condition	13
- Notices	
- Troubleshooting guidelines	
Warranty	14
- Warranty description	
- Customer Service	15
Appendix	
- Origin	
- Certification	16

Introduction

Introduction

Thank you for purchasing our product, HearingAble IRIS20. **IRIS20** is a personal sound amplifier that measures the hearing of the user and amplifies the surrounding sound properly through automatic fitting by using the Bluetooth wireless technology of smartphone.

Purpose

This product is a hearing electronic device that amplifies the surrounding sound, It helps the hearing ability of user who lost his hearing.

Scope

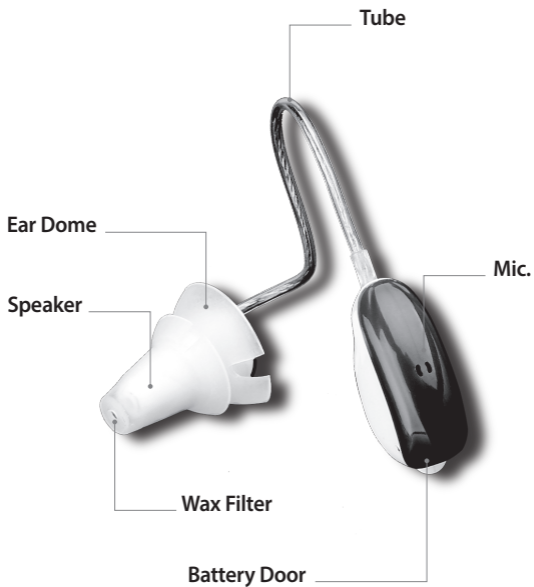
This user manual applies only to HearingAble **IRIS20**. *Some model names can be changed.

Notice

For patients with middle ear infection, the use of this product can be limited . Please discuss with a doctor before using. Regarding to the hearing of user, please consult with your specialist.

The technical specification of this product can be changed without prior notice

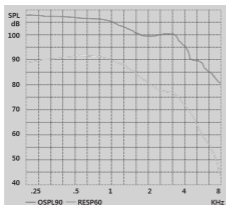
Features



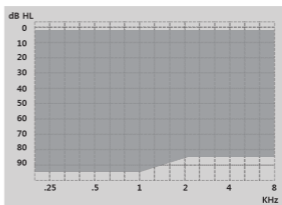
Technical Specifications

Item	Details
Bluetooth Version	Ver. 4.1 Low Energy
Number of Channels	20 ch (WDRC)
Max Output	108 dB @ 300Hz
Average Gain	40 dB
Available Hearing Level	Mild to Moderately Severe
Battery Type	IRIS20 Uses 312 Zinc Air Battery
Battery Life	90~130 hours
Weight	2.2 g
Color	White / Gray
Self Hearing Test (with App)	Yes
Mode (with App)	4 Types (Normal, Restaurant/Subway, Watching TV, Driving)
Volume (with App)	3 Steps (Low, Normal, High)
Power Control (with App)	Yes
Android Version	OS 4.4 or Later
iOS Version	OS 7.0 or Later / iPhone 4s or Later

ANSI S3.22 Testing diagram



Fitting range



Preparation

Configuration



IRIS 20 1 each, Manual, Cleaning tool,
Ear Dome 2 each(Semi-closed),
2 each(Closed), Warranty card.

Ear Dome



Attached to the product

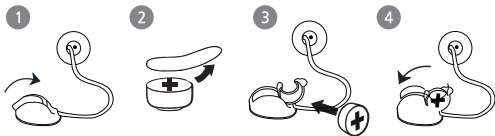
The ear dome protects the ear to avoid the strain when wearing the product and prevents the weakening output due to the wax.

Battery

IRIS 20 uses 312 zinc air battery.

How to change the battery

1. Open the battery case and remove the used battery.
2. Remove the sticker of new battery and wait for about 1 minute.
3. After inserting new battery, check whether the positive (+) terminal has been inserted correctly.
4. Close the battery case.



Preparation

How to Wear

Clean the ear of user before wearing and check if the battery case is closed.

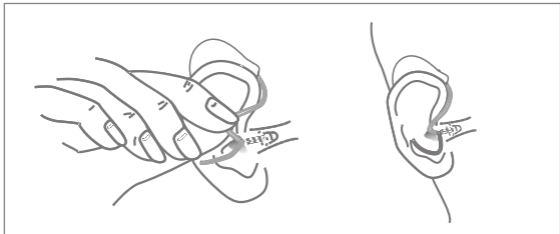
Order of Wearing

Step 1: Insert the speaker of product to the most comfortable position gently.

Step 2: Span the other part of product inside the ear flap.

Step 3: Push the speaker inside the ear at maximum.

(The accurate function shall be guaranteed when the speaker is worn deep inside the ear.)



***Note : Do not insert the product inside the ear without attaching the ear dome.**

Contents

How to install

1. Android Phone

Available for installation/use only for smartphones with OS Ver.4.4 or later. Search "**hearingable**" at the Google Play Store installed in the smartphone.

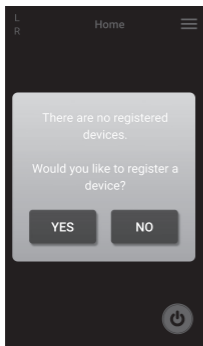


2. iPhone

Available for installation for iPhones with iOS Ver.7.0 or later and iPhone 4S or later. Search "**hearingable**" at the App Store installed in the iPhone. Install according to the guideline.

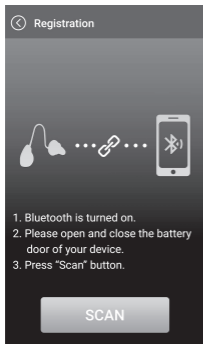


Application Program



this is the preparation screen to register the product on application program.

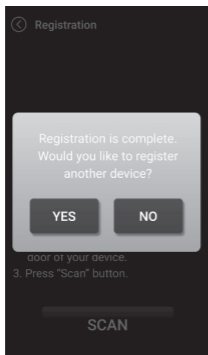
- Press [Yes] to register the product.
- If you press [No], only some of the functions will be available for use.



this is the search screen to register the product on application program.

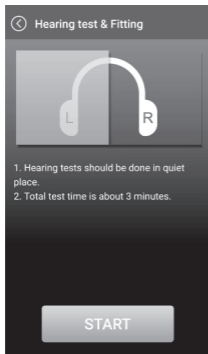
- Use the following method to search the product.
 - 1) Check if Bluetooth is ON.
 - 2) Open the battery case and insert the battery, and close it again.
 - 3) Press [SCAN] to search the device.

Application Program



The product registration has been completed.

- Press [Yes] to register other direction production additionally or press [No] to go next step.
- After completion of product registration, go to the hearing test.



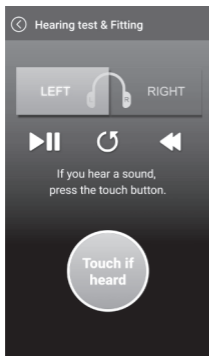
Direction of product to conduct the hearing test.

- Select (Left/Right) and press [START] to conduct the hearing test.

Notices for hearing test

- 1) The hearing test should be conducted in a silent place.
- 2) The required time for hearing test is about 3 minutes.

Application Program



This is the screen to set the hearing test and product suitable to users.

- If the sound goes on the product, press the round button in the center.
If you hear a sound, press it.

-When the test is completed, move to the next screen.

-You will repeat this process several times in order to test various audio frequencies.

-This test is very important to determine the optimal settings for your product.



Now, you can use all functions of the product.

-Your test has now been completed and your product is ready to be used.

-The environment mode located on the main screen is now customized according to your hearing test results.

-From the main screen, you will be able to change the product mode to match the appropriate environment.

For details, Please visit
www.hearingable.com

Precaution to Use

Hearing Test

IRIS20 is the product that uses the result of hearing test of a user and amplifies the sound.

Please check the following matters to proceed with the accurate hearing test.

- The hearing test should be done in a quiet place.
- Before the hearing test, check if the speaker of the product has been inserted deep inside the ear.
- Please press the button even when you hear the small sound at your hearing test.

After the hearing test, if its result is applied to the product, you can use the product without an application program.

Change the environment mode and sound volume in the application program

IRIS20 uses the application program to support five modes per environment and three kinds of sound volume. These functions can be adjusted on the basis of the result from the hearing test for a user, which helps the ability to hear under various environments. However, it is not helpful for the hearing of a user if the user uses the product continuously at the setting besides the result of the hearing test. (normal environment mode / normal level of sound volume) In order to prevent this, **IRIS20** will be readjusted automatically to a setting (normal environment mode / normal level of sound volume) for the result of the hearing test if the battery is replaced.

How to Adapt

IRIS20 requires a period of adapting to the product equivalent to other hearing aid products.

Please check the following matters for your effective adaptation.

- At your first use, please start in a quiet, familiar environment.
- Please use the product for 1 to 2 hours a day for the first week, and after the first week, you may gradually increase to about 2 to 3 hours a day.
- It is natural if you hear your voice louder than before wearing. Please try to adapt to your voice.
- Please take a break for a while if you feel tired during its use, and use it later.

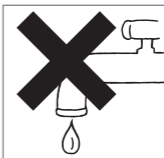
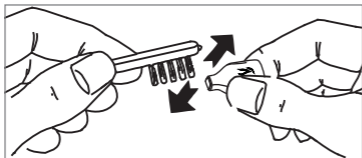
Maintenance

Maintenance method

One of the main causes of product failure can be the earwax. The wax filter is used to prevent it from entering into the product. To prevent failure, use the cleaning brush to clean the product everyday. It is recommended to clean it before wearing the product while the wax is dry. In addition, make sure to replace the wax filter regularly.

Cleaning method

Use a soft dry cloth or cleaning brush to clean the product. To prevent it from falling or breaking, clean it in an area with a soft bottom. Never use water or other forms of liquid to clean.



Contents

Battery Management

The performance of the product can be changed according to the quality of the battery in use.

- 1) It is recommended to use high quality batteries. It prevents the failure of product in advance.
- 2) When not used, remove the battery or turn the power off from the application program.
- 3) It is recommended to remove discharged battery from the product.

The materials leaked from the battery may cause it to shutdown.

Notices

The proper operating temperature is -20~60°C. For the long term storage, store at less than 85% of relative humidity. Available to use under air pressure of 500~1100 hPa.

Operating Condition

- 1) The corresponding wireless equipment may cause electronic wave interference.
- 2) As the corresponding wireless device has the possibility of causing electronic wave interference, services related to life safety are not available.

Maintenance

Troubleshooting guidelines

Symptoms	Causes	Effects
No sound	No battery	Replace with new battery
	Malfunction or lack of battery	Replace with new battery
	Battery direction has changed	Insert after checking the direction of battery
	Foreign materials in the mic. hole or speaker	Clean foreign materials with cleaning brush
	No external abnormality	Inquire the Customer Service
Not sufficient sound	No battery	Replace with new battery
	Lots of earwax	Consult with a doctor
	Sound volume is set "low"	Adjust the size of sound on application program
	Foreign materials in the mic. hole or speaker	Clean foreign materials with cleaning brush
	Change of hearing	Retry the hearing test of application program or consult with a doctor
	The product has been loosely inserted	Take the product out of the ear, and wear it again deep inside the ear with correct method
	The ear cap has not been attached correctly	Assemble cap to cover the speaker completely Adjust the hole of speaker to coincide with the hole of ear cap precisely
	Inaccurate hearing test	Implement the hearing test at a quiet place again
	Severe hearing loss	IRIS20 is suitable for a person with hearing impaired in mild to moderate severe
Howling (Beeping sound)	The product inserted loosely	Take the product out of the ear, and wear it again deep inside the ear with a correct method
	Lots of wax	Assemble cap to cover the speaker completely Adjust the hole of speaker to coincide with the hole of ear cap precisely
	The ear cap has not been attached correctly	Consult with a doctor
	Broken ear dome	Replace with new ear dome provided with purchase
Abnormal sound (Incorrect, distorted sound)	Broken ear dome	Replace with new battery
	Product broken	Inquire Customer Service
Application program not installed /not operated	Android Phone	Available only for smartphones with OS Ver.4.4 or later Activate the function of Bluetooth of smartphone
	iPhone	Available only for devices with iOS 7.0 or later/ iPhone 4S or later Activate Bluetooth function of iPhone

Warranty

Warranty description

- 1) The responsibility for all problems occurred when purchasing without checking the specification of the product correctly will be charged to the purchaser.
- 2) The request for return is acceptable within 3 days after purchase.
(Only when the box is not damaged)
- 3) If the box is opened and it is judged that the value of the product has been reduced, it will not be possible to return it.
- 4) For failures occurring during normal use within the guarantee period, the repair will be provided for free. with the following exceptions:
 - Failure or damage due to careless handling of user or wrong methods.
 - Failure or damage due to repair, modification, disassembling, or cleaning at will of user.
 - Failure due to natural disasters such as fire, earthquake, flood, or lightning.
 - Failure or damage due to falling, impact, pressure, dust, clay, sand, flooding etc.
 - Failure or damage due to careless storage (in high humidity, extreme cold)
 - Failure or damage due to the use of consumables except for genuine parts.
 - When not possible to verify the authenticity (when the serial number is damaged)
- 5) Other compensation criteria for repair, exchange, or refund of product is based on the consumer compensation criteria notified by the Economic Planning Board.

Customer Service

Warranty period : 1 year after purchase for free.

Website : www.hearingable.com

South Korea | MicroTech System, Inc (031-303-5800)

A-1102, 16, Deogyong-daero 1556beon-gil, Yeongtong-gu, Suwon-si, Gyeonggi-do, South Korea

USA | Customer Support

1-201-742-5252

Origin

Developer : Microtech System, Inc
 USA Importer/Distributor : Life Enterprise Global LLC (3 Sperry Rd, Fairfield, NJ 07004)
 Manufacturer : NewSound Technology Co., Ltd. (China)

Certification



KCC ID : MSIP-CMI-ZMO-IRIS20 FCC ID : 2A145-IRIS20

기종별	사용자 안내문
B급기기 (가정용 방송통신기자재)	이 기기는 가정용(B급) 전자파적합기기로서 주로 가정에서 사용하는 것을 목적으로 하며, 모든 지역에서 사용할 수 있습니다.

	기기의 명칭 : 특정소출력무선기기 (무선데이터 통신시스템용 무선기기)
	모델명 : IRIS20
	인증번호 : MSIP-CMI-ZMO-IRIS20
	인증받은자의 상호 : (주)마이크로텍시스템
	제조년월 : 년 월
제조사 및 제조국가 : NesSound Technology Co., Ltd / 중국	
해당무선설비는 운용 중 전파혼신 가능성이 있음	

CE Statement

This product is CE marked according to the provision of the Council Directive 93/42/EEC. Here by NewSound Technology Co.,Ltd declares that this product is in compliance with the essential requirements and other relevant provisions of Directive 93/42/EEC.

Contents

FCC Warning

FCC Warning

This device complies with part 15 of the FCC Rules.

Operation is subject to the following two conditions:

- (1) This device may not cause harmful interference, and
- (2) this device must accept any interference received, including interference that may cause undesired operation.

Note

This equipment has been tested and found to comply with the limits for a Class B digital device, pursuant to part 15 of the FCC Rules. These limits are designed to provide reasonable protection against harmful interference in a residential installation.

This equipment generates uses and can radiate radio frequency energy and, if not installed and used in accordance with the instructions, may cause harmful interference to radio communications. However, there is no guarantee that interference will not occur in a particular installation.

If this equipment does cause harmful interference to radio or television reception, which can be determined by turning the equipment off and on, the user is encouraged to try to correct the interference by one or more of the following measures:

- Reorient or relocate the receiving antenna.

- Increase the separation between the equipment and receiver.

Connect the equipment into an outlet on a circuit different from that to which the receiver is connected.

Consult the dealer or an experienced radio/TV technician for help.

Any changes or modifications not expressly approved by the party responsible for compliance could void the user's authority to operate the equipment.

The device has been evaluated to meet general RF exposure requirement.

The device can be used in portable exposure condition without restriction

FDA Information

Good health practice requires that a person with a hearing loss have a medical evaluation by a licensed physician (preferably a physician who specializes in diseases of the ear) before purchasing a hearing aid. Licensed physicians who specialize in diseases of the ear are often referred to as otolaryngologists, otologists or otorhinolaryngologists. The purpose of medical evaluation is to assure that all medically treatable conditions that may affect hearing are identified and treated before the hearing aid is purchased. Following the medical evaluation, the physician will give you a written statement that states that your hearing loss has been medically evaluated and that you may be considered a candidate for a hearing aid. The physician will refer you to an audiologist or a hearing aid dispenser, as appropriate, for a hearing aid evaluation. The audiologist or hearing aid dispenser will conduct a hearing aid evaluation to assess your ability to hear with and without a hearing aid. The hearing aid evaluation will enable the audiologist or dispenser to select and fit a hearing aid to your individual needs. If you have reservations about your ability to adapt to amplification, you should inquire about the availability of a trial-rental or purchase-option program. Many hearing aid dispensers now offer programs that permit you to wear a hearing aid for a period of time for a nominal fee after which you may decide if you want to purchase the hearing aid. Federal law restricts the sale of hearing aids to those individuals who have obtained a medical evaluation from a licensed physician. Federal law permits a fully informed adult to sign a waiver statement declining the medical evaluation for religious or personal beliefs that preclude consultation with a physician. The exercise of such a waiver is not in your best health interest and its use is strongly discouraged. A hearing aid will not restore normal hearing and will not prevent or improve a hearing impairment resulting from organic conditions. Use of a hearing aid is only part of hearing habilitation and may need to be supplemented by auditory training and instruction in lip reading. In most cases, infrequent use of a hearing aid does not permit a user to attain full benefit from it.

Children with hearing loss

In addition to seeing a physician for a medical evaluation, a child with a hearing loss should be directed to an audiologist for evaluation and rehabilitation since hearing loss may cause problems in language development and the educational and social growth of a child. An audiologist is qualified by training and experience to assist in the evaluation and rehabilitation of a child with a hearing loss.

IRIS20

IRIS20 is a personal **sound amplifier** that measures the hearing and amplifies the surrounding sound properly through **Automatic fitting** by using the **Bluetooth wireless technology** of your smart-phone.

www.hearingable.com
hearingable@hearingable.com